

# Civilizational Development: Foreseeing the Future Through the Past?

Mikheil Abramishvili

"I know not with what weapons World War III will be fought, but World War IV will be fought with sticks and stones"

*Escribed to Albert Einstein*



**\$300m Paul Gauguin**



**\$274m Paul Cézanne**



**\$186m Mark Rothko**



**\$158.4m Gustav Klimt**



**\$72m**





**Ancient tin mines (☆), Earliest tin-bronze artifacts (★), Earliest Lapis Lazuli artefacts (★)**



**Arukhlo I, South Georgia**  
c. 5800–5300 BC



**Tel Tsaf , Jordan Valley**  
c. 5100–4600 BC



**Pločnik, Serbia**  
c. 4650 BC

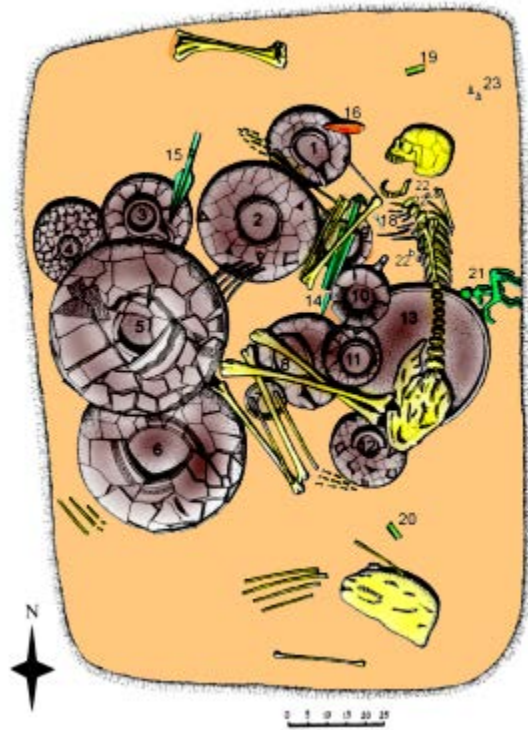


**Delisi, Tbilisi**  
c. 4000 BC

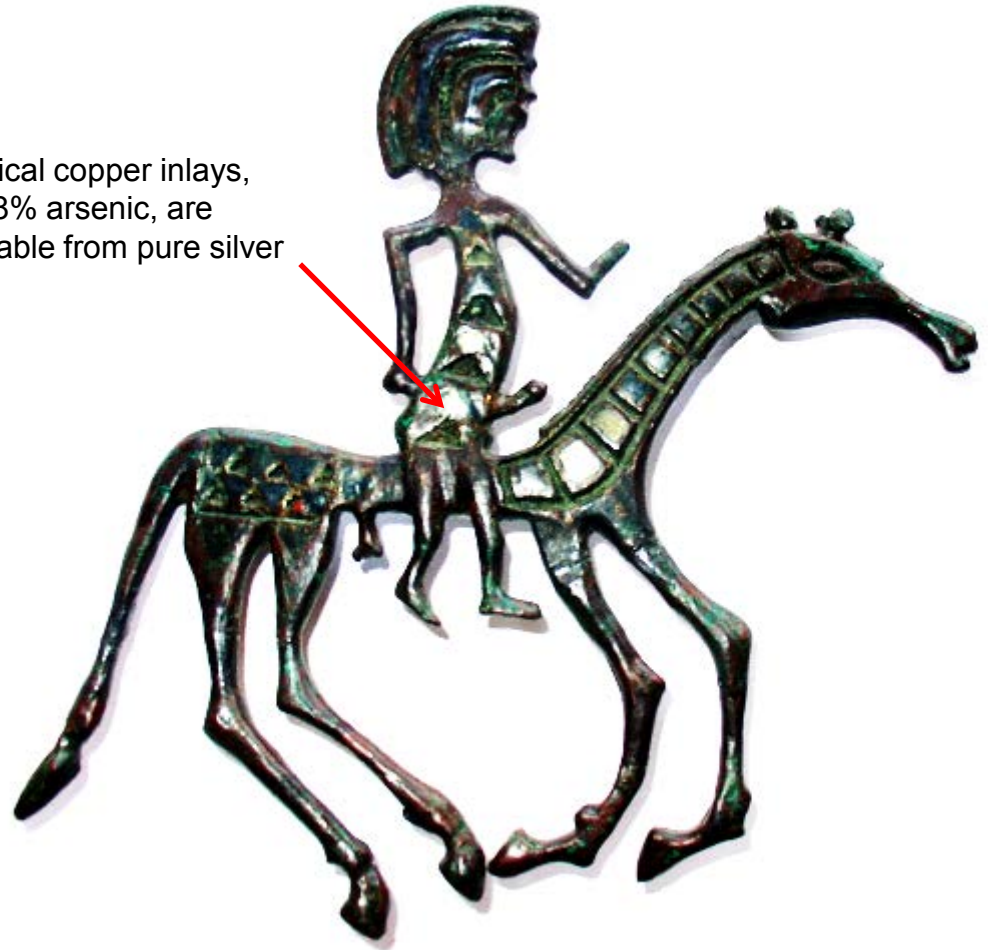




**Treli Cemetery Burial #65, Tbilisi**  
**13th century BC**



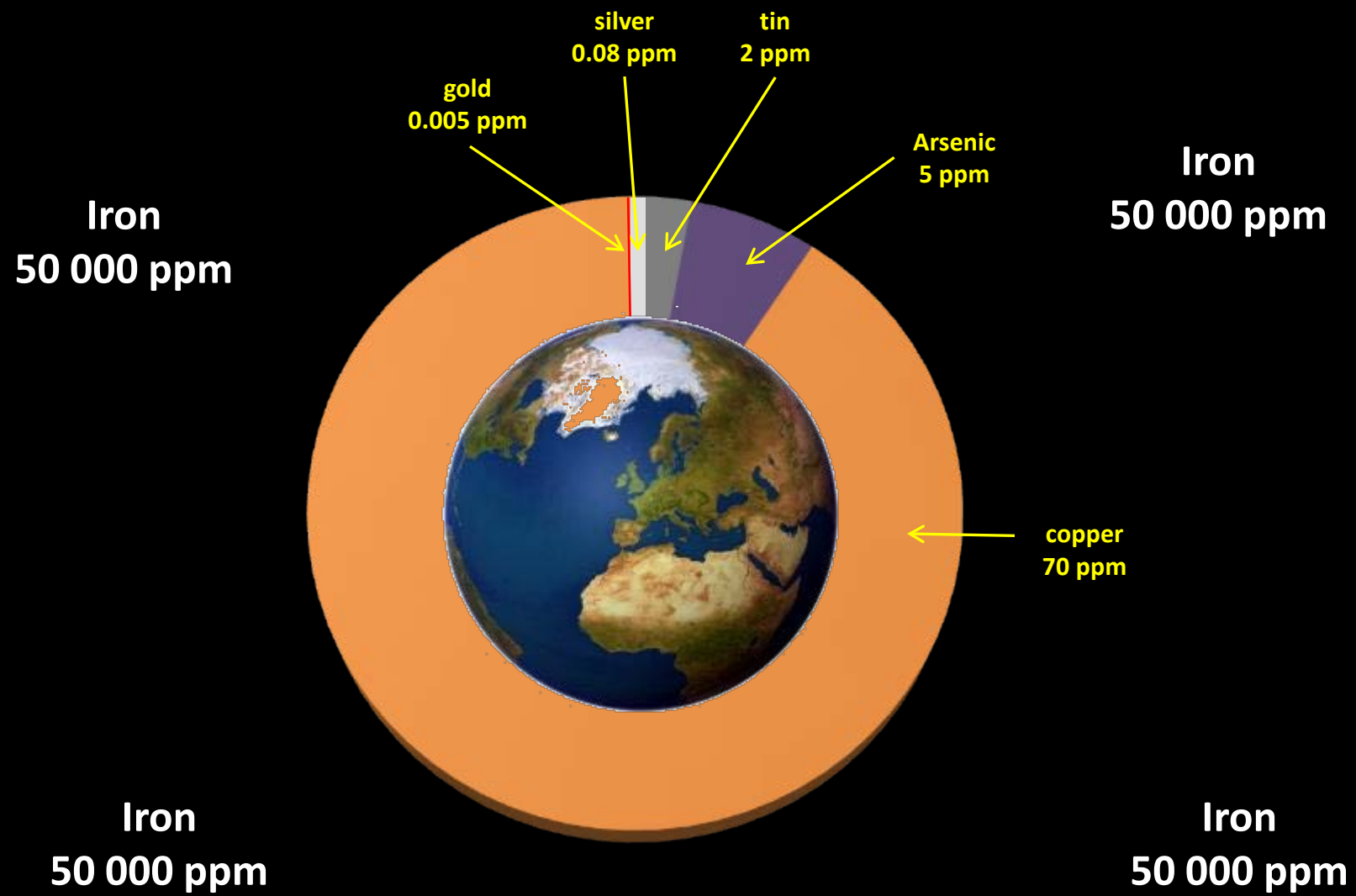
These arsenical copper inlays, containing 28% arsenic, are indistinguishable from pure silver







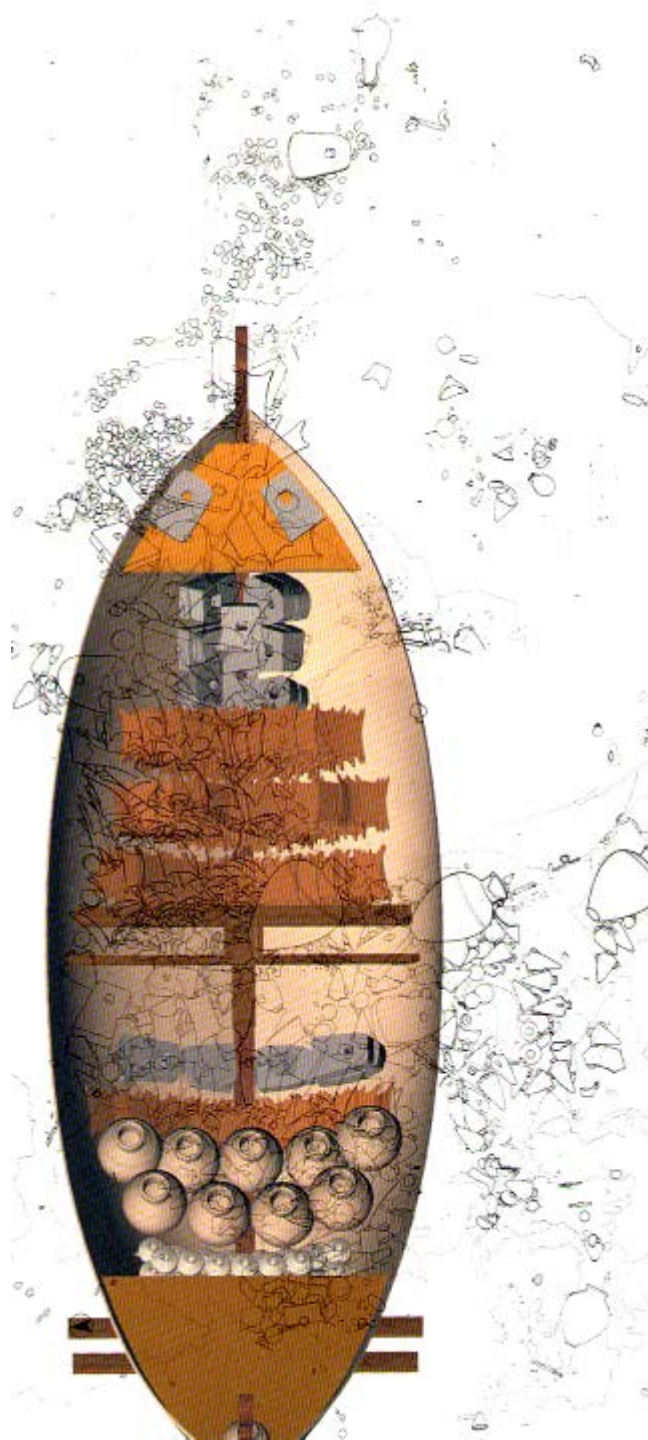
# The ratio of metals in the earth's crust used in ancient times (in parts per million)







Uluburun Shipwreck  
South Turkey  
(c. 1300 BC



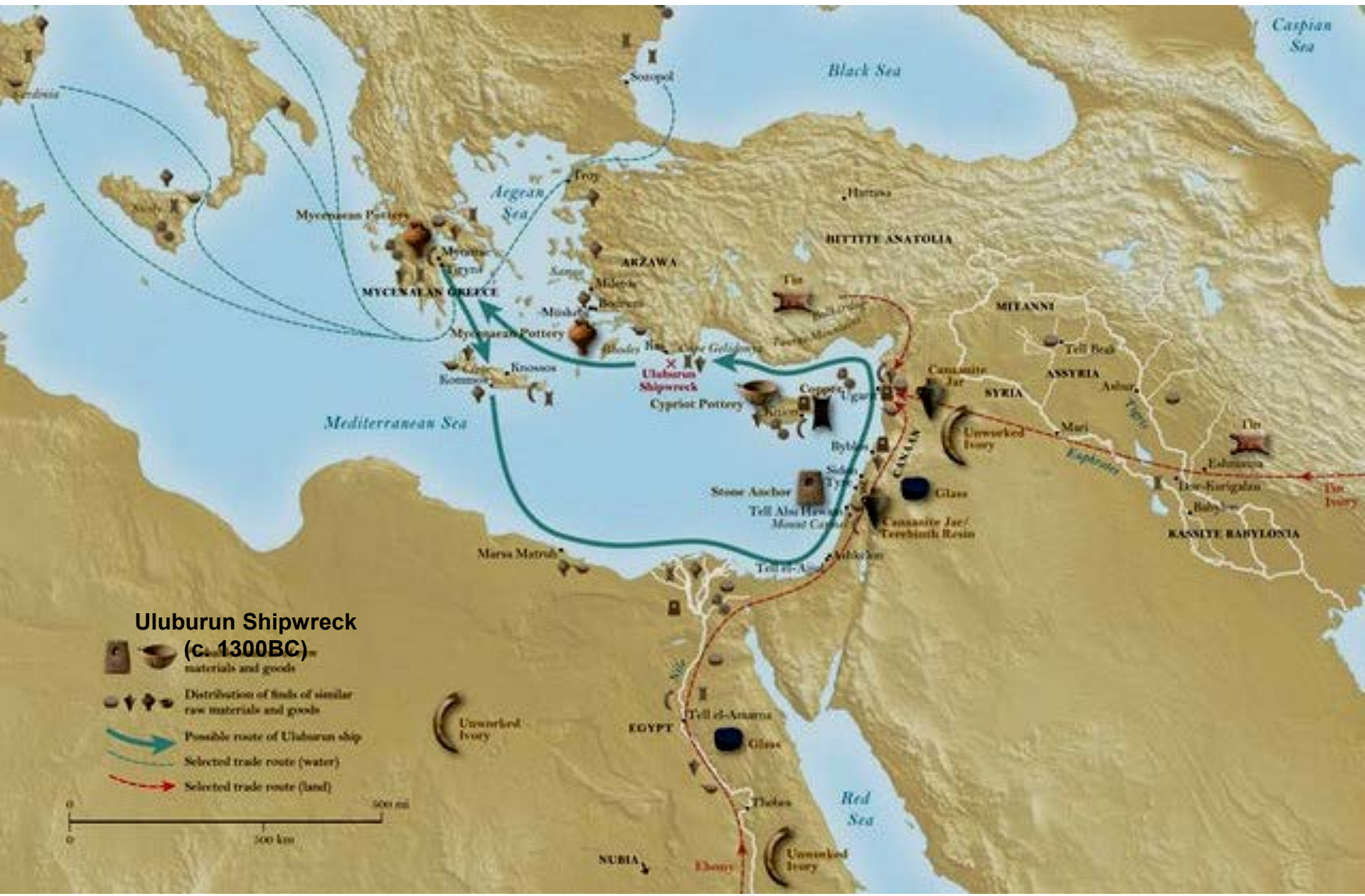
Copper ingot



Tin ingot



The cargo from the Uluburun shipwreck reveals a globalized Late Bronze Age society, with goods originating from Central Asia, Africa, the Mediterranean, the Aegean, and the Baltic regions.







Pylos



Mycenae



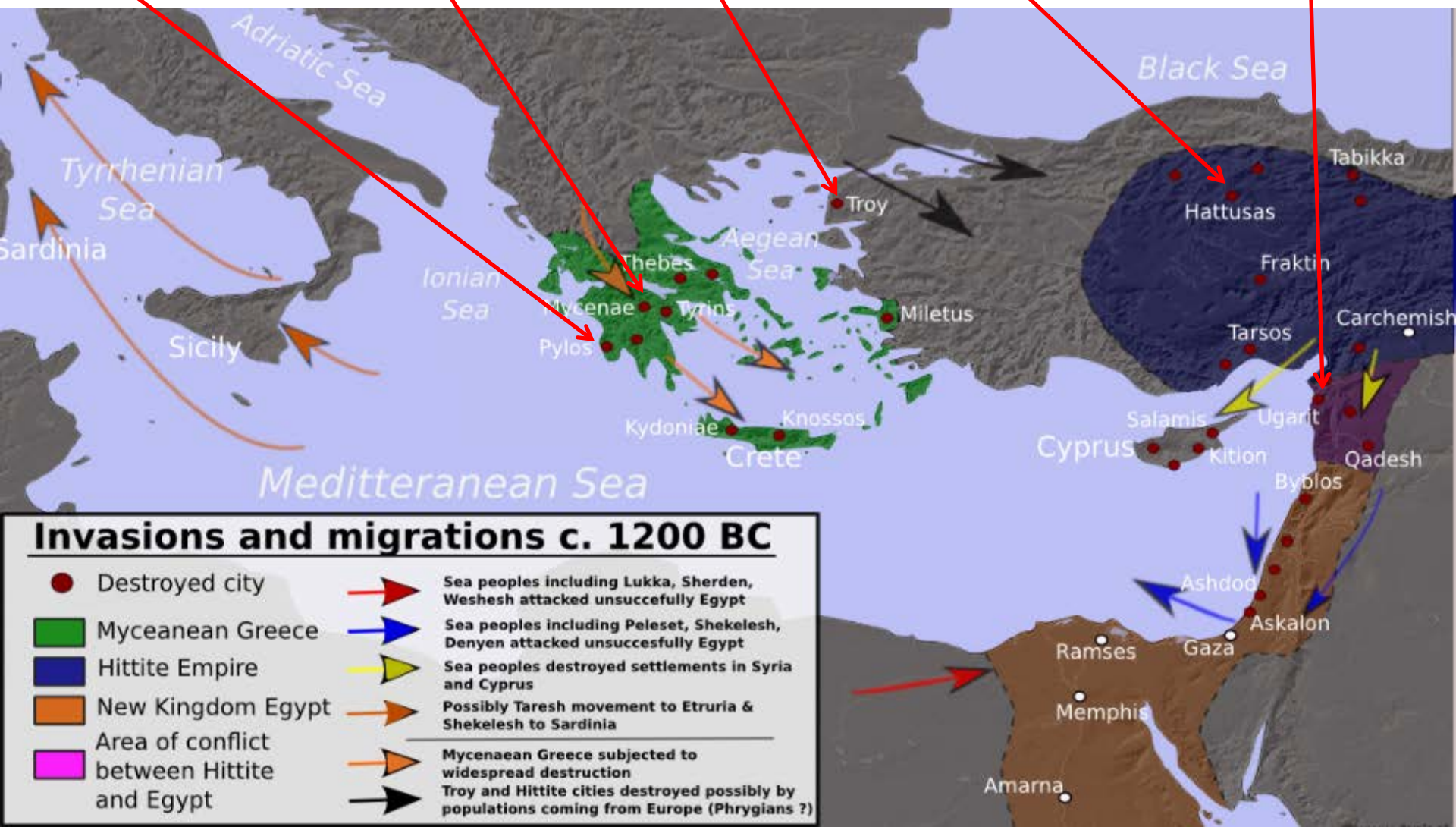
Troy VIIa



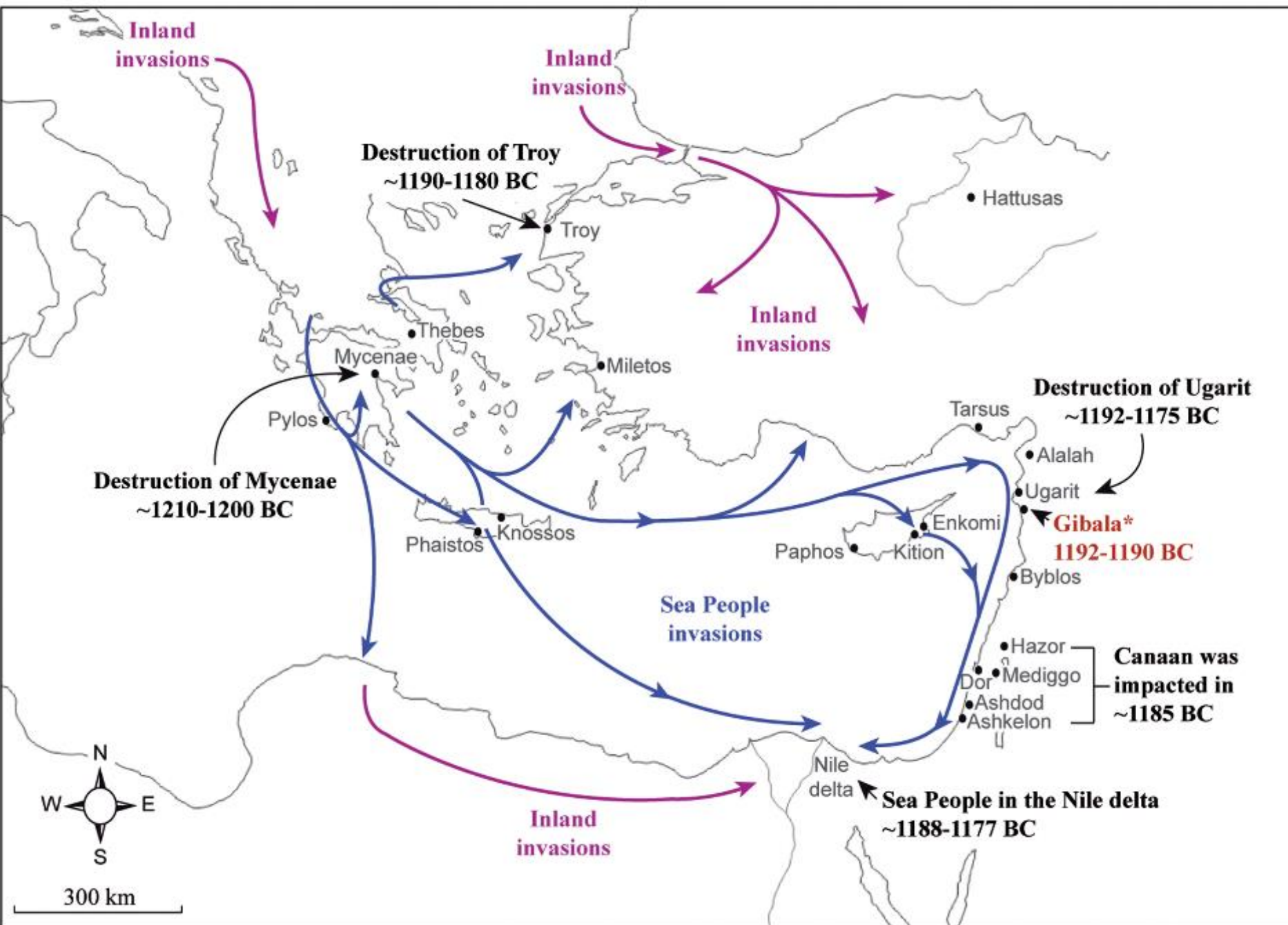
Hattusha



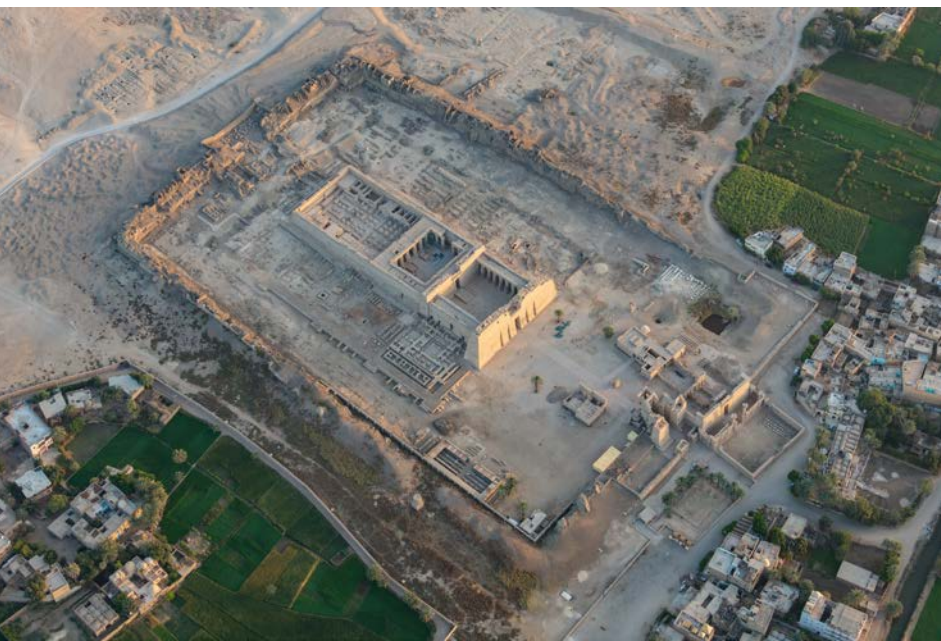
Ugarit







Relief at the Medinet Habu Mortuary Temple of Ramses III depicting the battle with the 'Sea Peoples'





# The 'Sea Peoples' According to Egyptian Texts and Their Possible Links to Mediterranean Ethnic Groups

## **Peleset** (P-r-s-t)

Often identified with the Philistines of the Hebrew Bible, settled in the coastal regions of Canaan.

## **Tjekker** (T-k-k-r)

Sometimes associated with the Teucrians of the Troad in northwestern Anatolia, settled in the region around Dor in the Levant.

## **Shekelesh** (S-k-r-s)

Likely associated with the Sicels, who were inhabitants of Sicily. Some scholars also suggest a connection to the island of Sagalassos in southwestern Anatolia.

## **Denyen** (D-n-y-n or D-j-n-n)

Often linked to the Danaoi, a term used for the Greeks in Homeric epics. They might also be related to the Denyen of the Levant, possibly from the region of northern Syria.

## **Weshesh** (W-s-s)

Less certain identification, but some suggest a connection to people from western Anatolia or the Aegean.

## **Ekwesh** (Eqwesh or Akwasha) (Eqwesh or 3-k-w-s)

Often identified with the Achaeans, another name for the Mycenaean Greeks. They might have been part of the Greek world that collapsed during the same period.

## **Lukka** (L-k-k)

Identified with the Lycians from southwestern Anatolia.

## **Shardana** (S-r-d-n)

linked to the Sardinians, believed to be connected to the Sherden or Shardana, known as mercenaries in Egyptian texts.

## **Teresh** (T-r-s)

Is associated with the Tyrrhenians, an ancient name for the Etruscans, or possibly with the Troad region in northwestern Anatolia.





The oil monopoly is in danger of being destabilized by the introduction of alternative energies that cannot be monopolized. These include wind, solar, biofuel, and many other as yet unimaginable resources, such as creating renewable petroleum from bacteria's fatty acids or electricity through photosynthesis—bringing a new meaning to the idea of spinach as a power food ☺



Spinach - Power Food of  
Popeye the Sailor



**Thank You for Your attention  
and  
patience with my mumbling**

